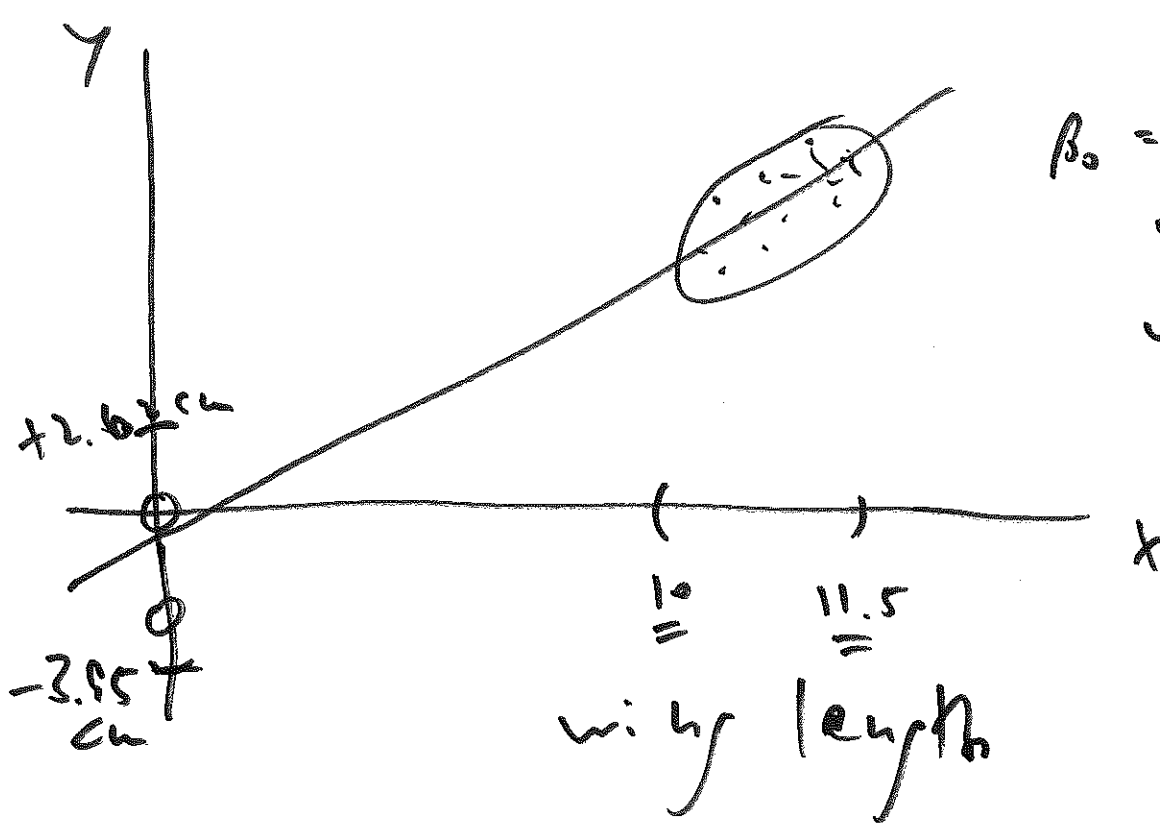
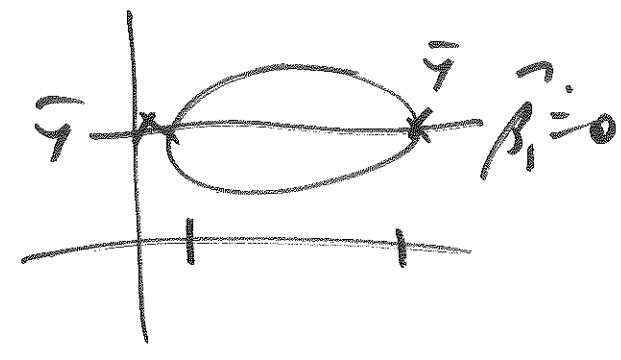
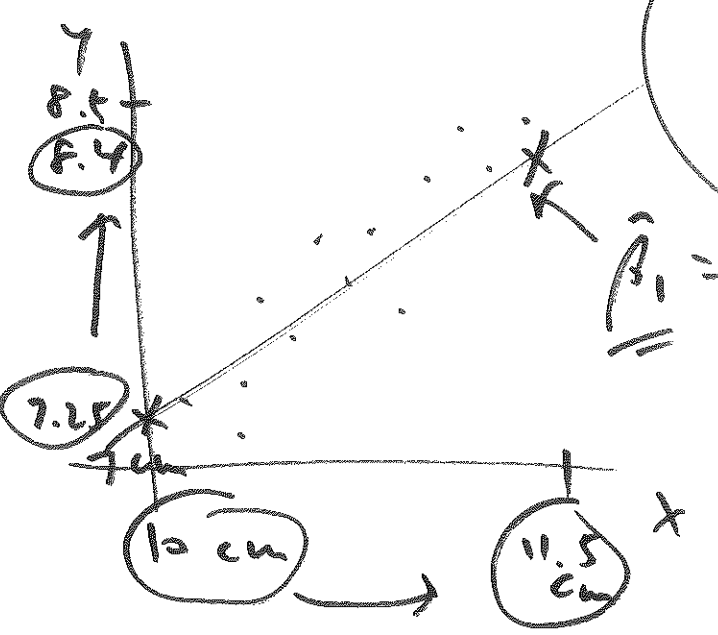


this regression;
 time: ANOVA
 next time: ↓

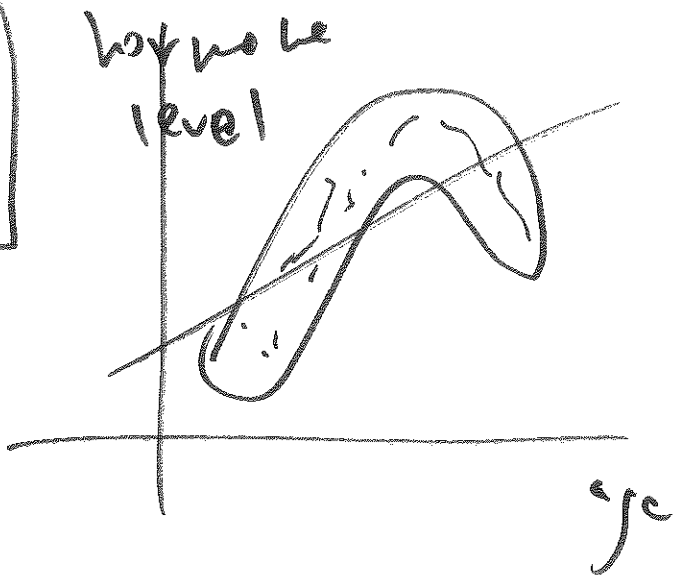
red: LN pp. L-269 → AMS 7
 L-301 29 May 18
 today: pp. (LN) L-248 → ①
 hwk 4 due Fri 8 Jun by 11.59 pm

is $\hat{\beta}_1$ large in practical terms?

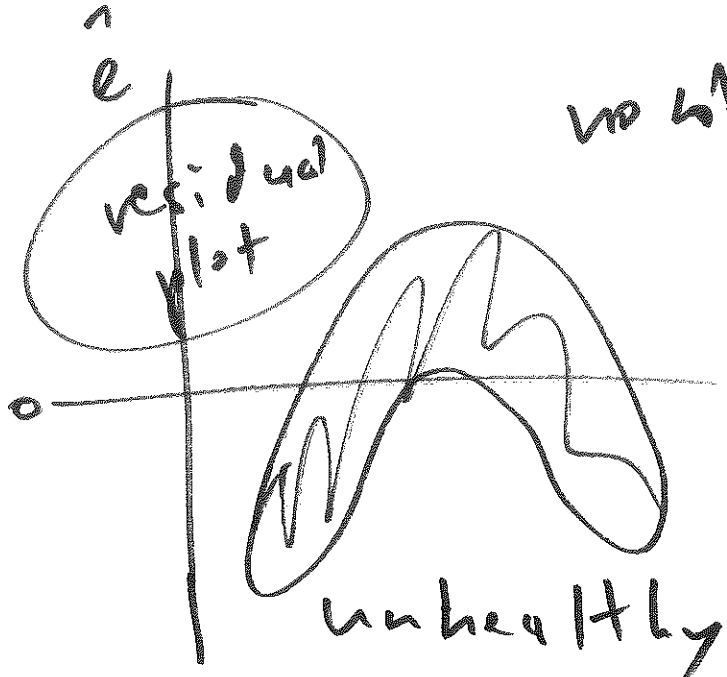


β_0 = predicted
 y-value
 when
 $x = 0$

model-checking



linear regression fails to capture relationship between x & y



no linearity

